

NORTH ATWATER BRIDGE



Presented at: Equine Advisory Committee Meeting
March 26, 2018

NORTH ATWATER BRIDGE

Meeting Agenda

- Project Overview
- Anticipated Construction Activities and Timeline
- LA River Bike Path Detour during Construction
- Easterly Bank Improvements
- Westerly Bank Improvements
- Q & A

NORTH ATWATER BRIDGE

Project Overview

- Non-motorized, steel cable-stay bridge
- Approximately 325 feet in length, spans LA River
- One center pier with mast
- Easterly and westerly abutments
- Two separate paths
 - Pedestrians/Bicyclists on one path (approx. 12 ft width)
 - Equestrians on one path (approx. 12 ft width)

NORTH ATWATER BRIDGE

Project Overview

- On May 26, 2017, Los Angeles City Council approved the North Atwater Bridge, with subsequent concurrence by the Mayor, to move the project forward:
 - Accepted a gift donation of \$3.88 M from a private donor, Morton La Kretz;
 - Accepted all documents for the construction of the project from River LA, a nonprofit organization previously known as LA River Revitalization Corporation;
 - Accepted all other grants from River LA, including a \$3.66 M Active Transportation Program grant from Caltrans for this project

NORTH ATWATER BRIDGE

Anticipated Construction Activities and Timeline

- Bridge foundation and abutments: April 2018 - Oct. 2018 (First Dry Season)
- Easterly and Westerly Bridge Landings: Oct. 2018 to April 2019
- Bridge superstructure: April 2019 - Oct. 2019 (Second Dry Season)
- Landscaping, Electrical, & Misc.: Sept. 2019 - Nov. 2019

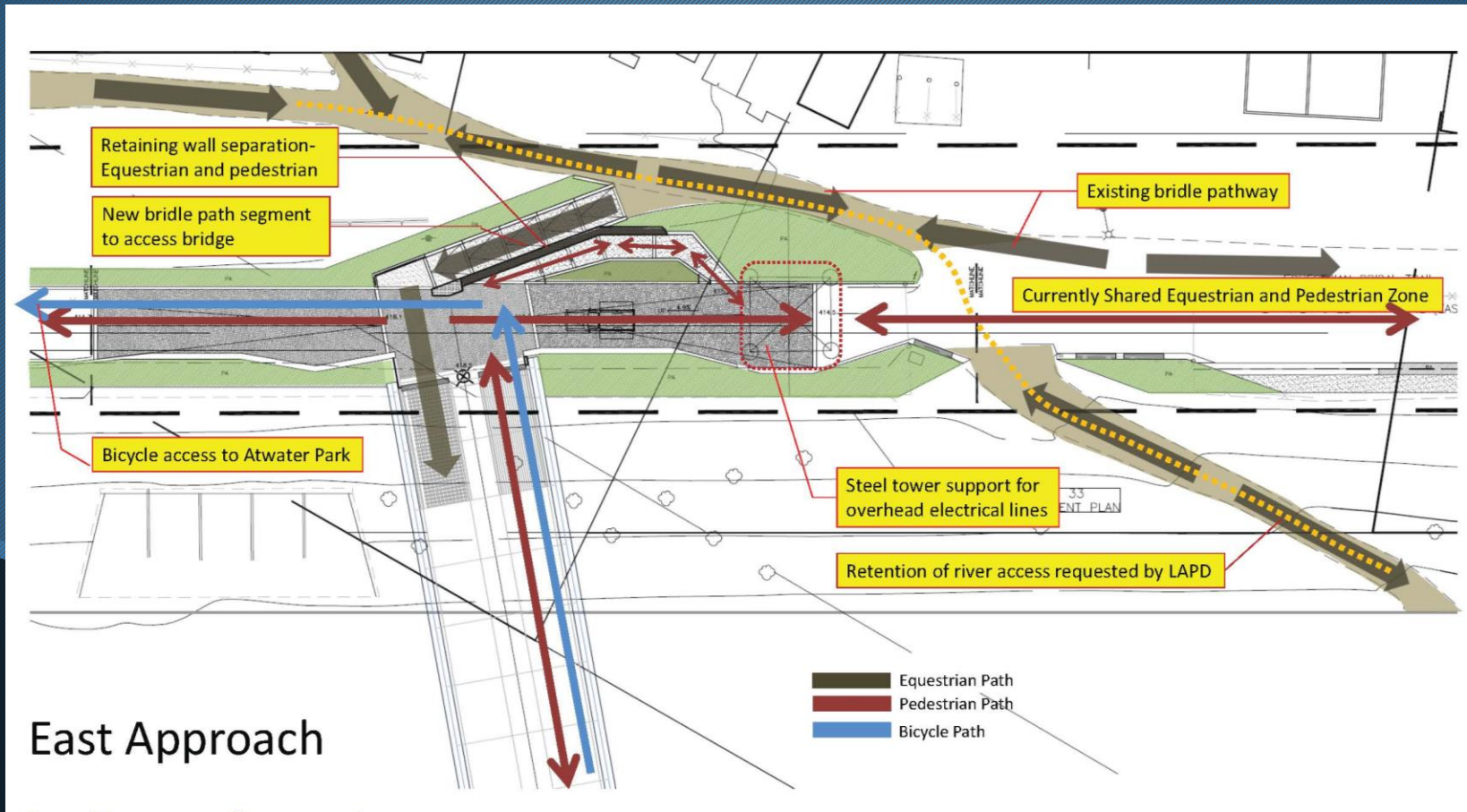
NORTH ATWATER BRIDGE



  Project Site
 Bike Route

NORTH ATWATER BRIDGE

Easterly Bank Improvements – Plan View



NORTH ATWATER BRIDGE

Easterly Bank Improvements - Rendering

Greenway trail better defined and developed within the zone around the bridge

Existing dirt ramp

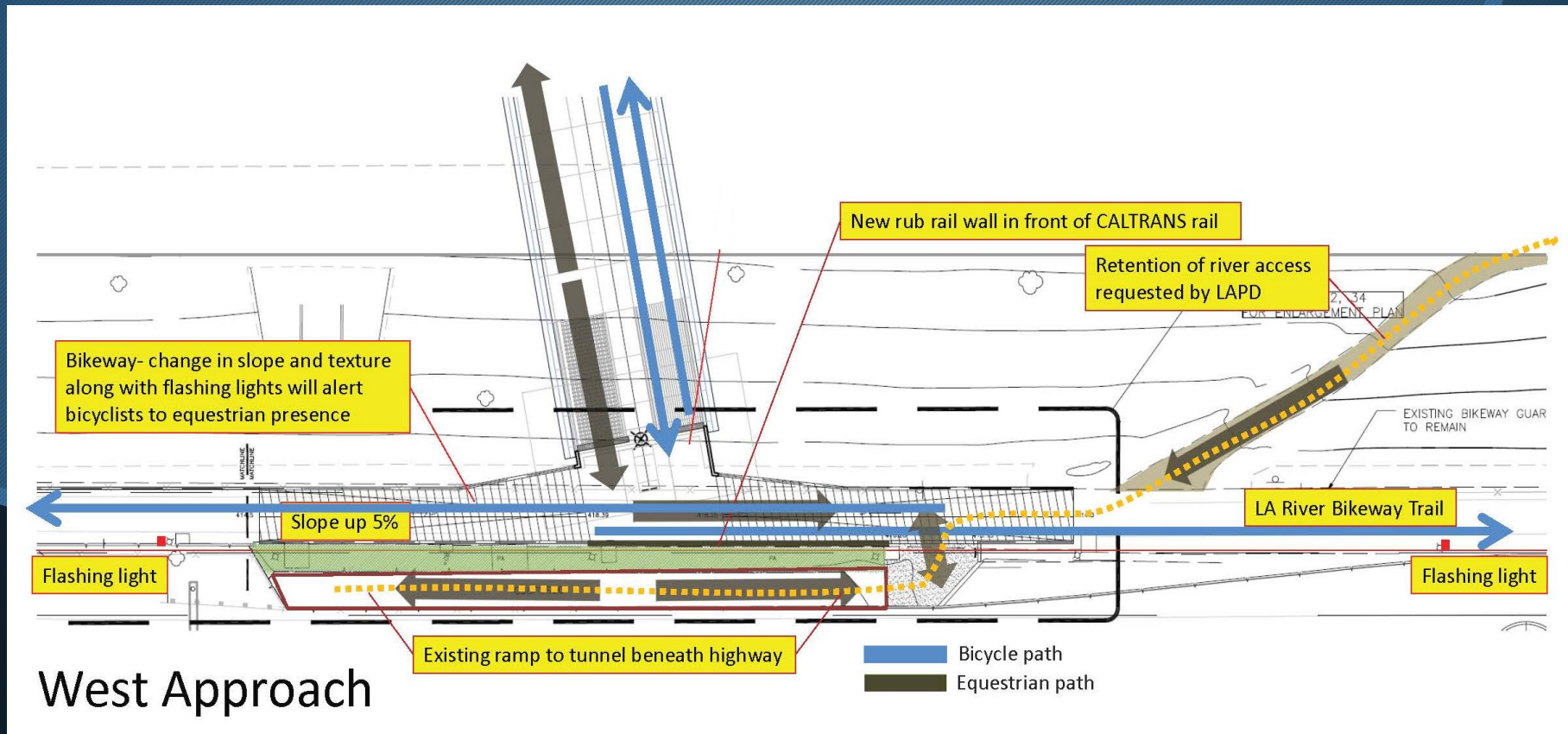


Equestrian access pathway

Existing bridge path

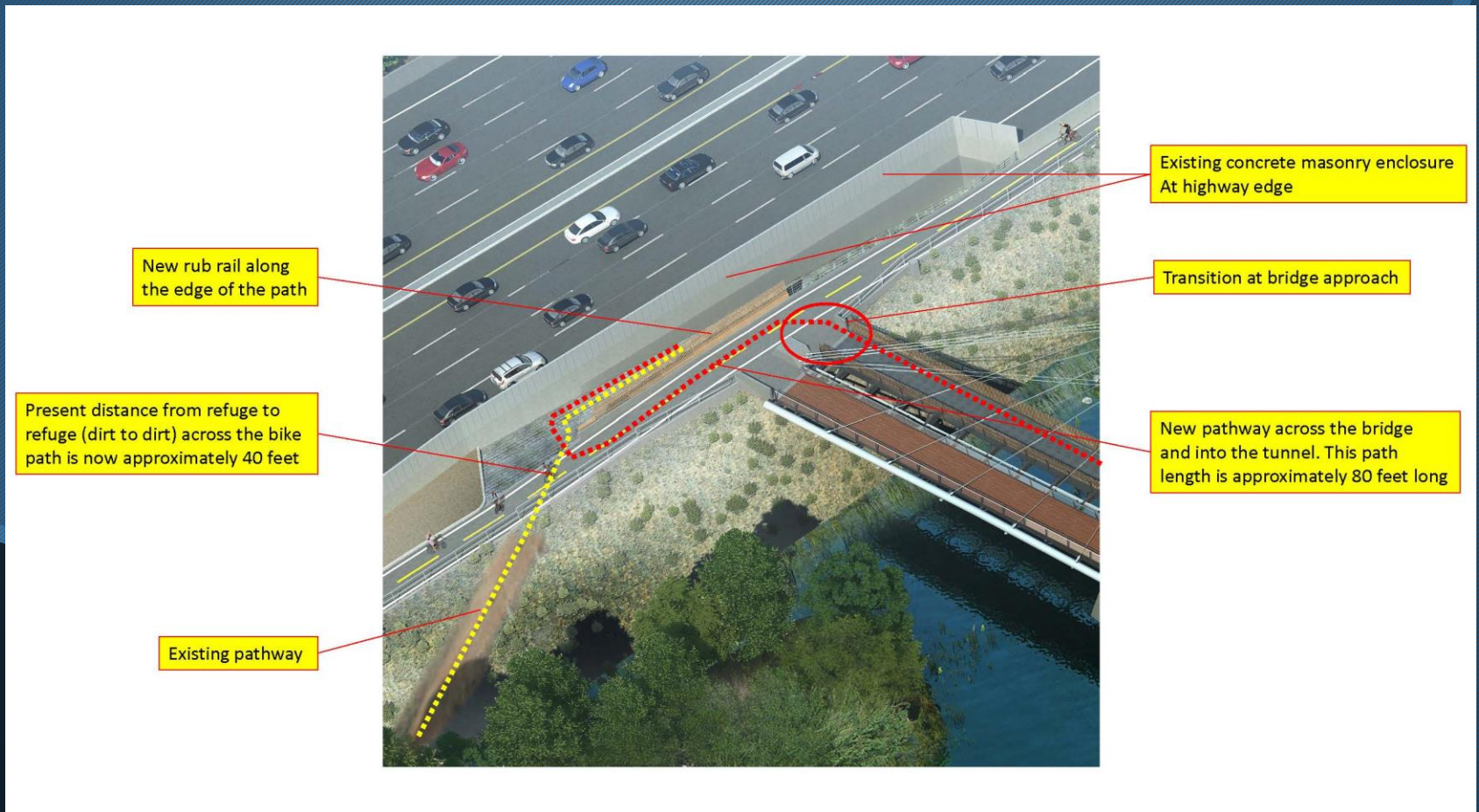
NORTH ATWATER BRIDGE

Westerly Bank Improvements – Plan View



NORTH ATWATER BRIDGE

Westerly Bank Improvements - Rendering



NORTH ATWATER BRIDGE

QUESTIONS?